



Flangeless



With EIA Flange



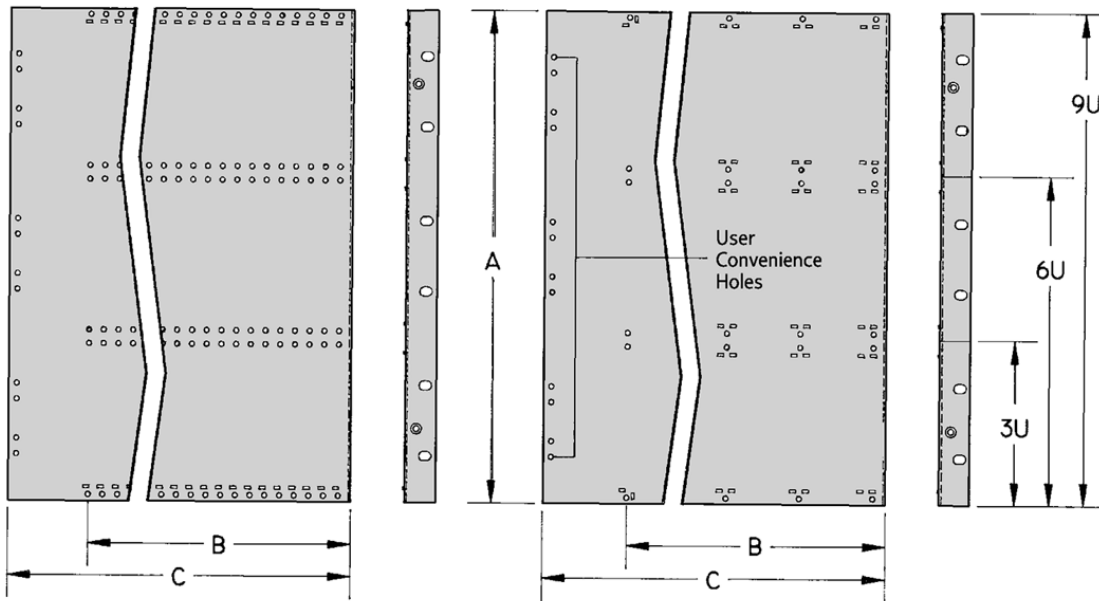
**Universal
With EIA Flange & Universal
Hole Spacing (.12mm)**

Side Panels

Vector Europackaging Side Panels feature brushed aluminum construction with clear irridite finish. There are 3 versions available:

- With Flanges:** Provides front rack mounting surface
- Universal:** Versatile side-panel with flanges - extrusion mounting holes positioned on 12mm centers for maximum versatility
- Flangeless:** For maximum economy of space

Non EMC Subracks



Part No.	Card Height X Depth (mm)	Description	B	C	Part No.	Card Height X Depth (mm)	Description	B	C	Part No.	Card Height X Depth (mm)	Description	B	C
5260475	3U x 160	Flangeless	6.57"	9.27"	5260267	6U x 160	Flangeless	6.57"	9.27"	5260467	9U x 160	Flangeless	6.57"	9.27"
5260251	3U x 160	W/ Flanges	6.57"	9.27"	5260204	6U x 160	W/ Flanges	6.57"	9.27"	5260249	9U x 160	W/ Flanges	6.57"	9.27"
5260476	3U x 220	Flangeless	8.93"	11.63"	5260266	6U x 220	Flangeless	8.93"	11.63"	5260468	9U x 220	Flangeless	8.93"	11.63"
5260252	3U x 220	W/ Flanges	8.93"	11.63"	5260212	6U x 220	W/ Flanges	8.93"	11.63"	5260311	9U x 220	Universal	8.93"	11.63"
5260477	3U x 280	Flangeless	11.3"	14.00"	5260472	6U x 280	Flangeless	11.3"	14.00"	5260248	9U x 220	W/ Flanges	8.93"	11.63"
5260264	3U x 280	W/ Flanges	11.3"	14.00"	5260289	6U x 280	Universal	11.3"	14.00"	5260469	9U x 280	Flangeless	11.3"	14.00"
					5260247	6U x 280	W/ Flanges	11.3"	14.00"	5260291	9U x 280	Universal	11.3"	14.00"
					5260473	6U x 340	Flangeless	13.66"	16.36"	5260294	9U x 280	W/ Flanges	11.3"	14.00"
					5260239	6U x 340	W/ Flanges	13.66"	16.36"	5260470	9U x 340	Flangeless	13.66"	16.36"
					5260474	6U x 400	Flangeless	16.02"	18.72"	5260240	9U x 340	W/ Flanges	13.66"	16.36"
					5260309	6U x 400	Universal	16.02"	18.72"	5260471	9U x 400	Flangeless	16.02"	18.72"
					5260243	6U x 400	W/ Flanges	13.02"	18.72"	5260308	9U x 400	Universal	16.02"	18.72"
										5260299	9U x 400	W/ Flanges	16.02"	18.72"



Specification subject to change without notice